

# Color Selection Guide



**COATED METALS GROUP**

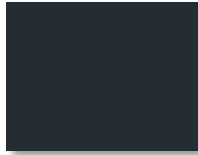
**ULTRA-CLAD™** with **COOL** technology.

Cool coating with premium heat-reflective technology from Dura Coat.

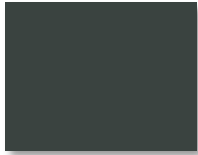
KYNAR 500 or HYLAR 5000 Pre-Finished Steel & Aluminum Flat Sheets & Coil.



Deep Black



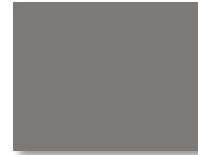
Matte Black



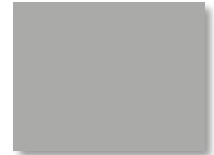
Charcoal Gray



Musket Gray



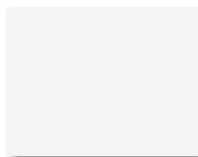
Slate Gray



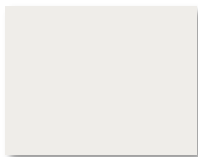
Ash Gray



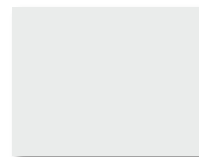
Almond



Bright White



Bone White



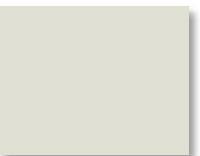
Stone White



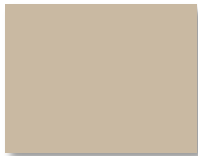
Cityscape



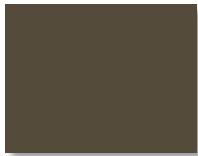
Extra Dark Bronze



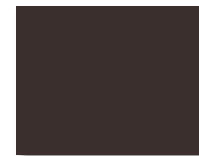
Sandstone



Sierra Tan



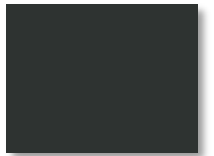
Medium Bronze



Mansard Brown



Burnished Slate



Dark Bronze



Harford Green



Classic Green



Hemlock Green



Teal



Slate Blue



Royal Blue



Regal Red



Colonial Red



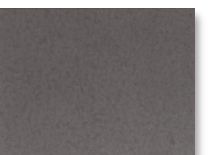
Burgundy



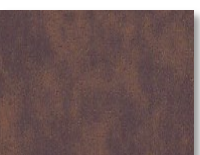
Terra Cotta



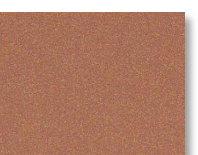
Galvalume Plus



\* Vintage



\* Western Rust



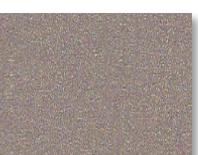
\* Copper Penny



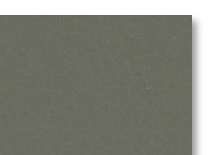
\* Weathered Zinc



\* Silver



\* Champagne



\* Aged Copper

\*Premium Color

Colors represented on this electronic chart may not exactly match actual material. All colors should be verified using actual metal samples. Mismatch of electronic color representations and actual material shall not be accepted as a cause for rejection.